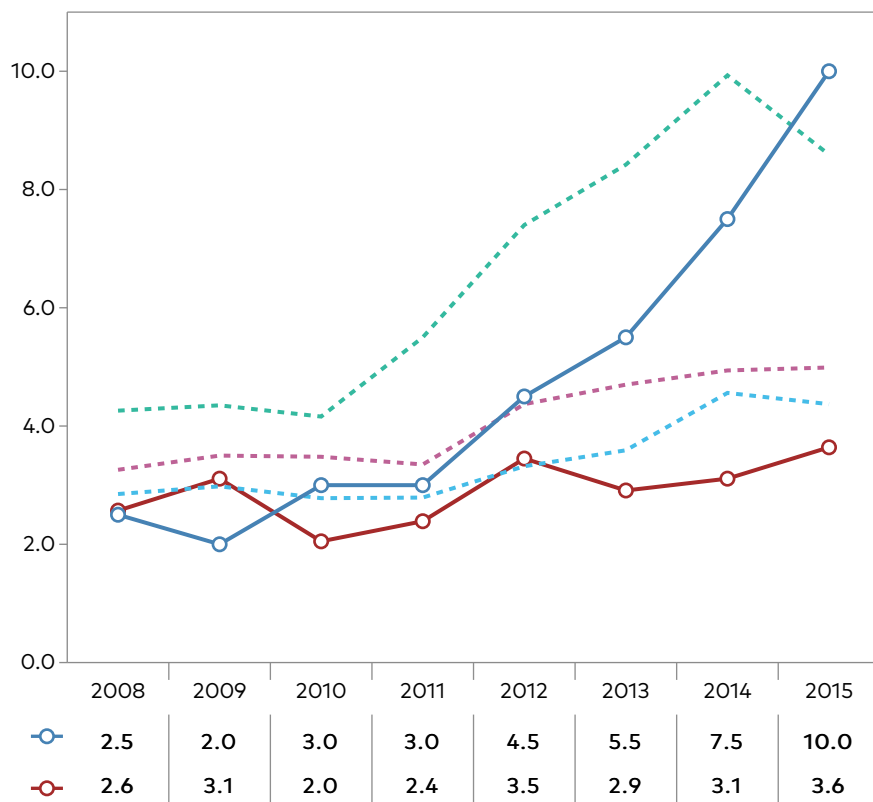


Flagstaff Palliative Care_at ACME_Test Facility

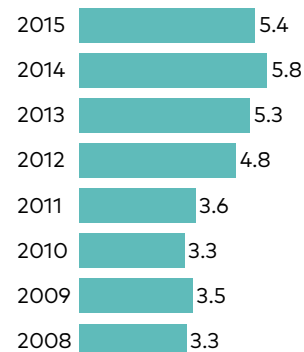
Report Date 07-12-2016

Total Palliative Care Team FTE by Bed Size by Year



Mean FTE

All Programs



Legend

- Your Program
- <150 Beds (Peer Group)
- - - 150-299 Beds
- - - 300-499 Beds
- - - 500+ Beds

Data Year	Your Program	<150 Beds	150-299 Beds	300-499 Beds	500+ Beds	All Programs
2015	10.0	3.6	4.4	5.0	8.6	5.4
2014	7.5	3.1	4.6	4.9	9.9	5.8
2013	5.5	2.9	3.6	4.7	8.4	5.3
2012	4.5	3.5	3.3	4.4	7.4	4.8
2011	3.0	2.4	2.8	3.4	5.5	3.6
2010	3.0	2.0	2.8	3.5	4.2	3.3
2009	2.0	3.1	3.0	3.5	4.3	3.5
2008	2.5	2.6	2.9	3.3	4.3	3.3

Quick Facts

Full-time equivalent (FTE) is calculated as total staff time dedicated to the palliative care program.

The FTE calculation includes funded, in-kind and volunteer staff across all disciplines.